

MONA OFFSHORE WIND PROJECT

Annex 3.10 to the Applicant's response to Relevant Representations at the Procedural Deadline

Applicant's Response to Relevant Representation from Natural Resources Wales (NRW): RR-011.138

Deadline: Procedural Deadline

Application Reference: EN01037

Document Number: MOCNS-J3303-RPS-10231

Document Reference: S_PD_3.10

25 June 2024

F01



Image of an offshore wind farm

MONA OFFSHORE WIND PROJECT

Document status

Version	Purpose of document	Authored by	Reviewed by	Approved by	Review date
F01	Procedural Deadline	RPS	Mona Offshore Wind Ltd	Mona Offshore Wind Ltd	June 2024

Prepared by:

RPS

Prepared for:

Mona Offshore Wind Ltd.

Contents

1	ANNEX 3.10 TO THE APPLICANT’S RESPONSE TO RELEVANT REPRESENTATION FROM NATURAL RESOURCES WALES 11 3.6.3.....	1
1.1	Introduction	1
1.2	Response.....	1

Figures

- Figure 1.3: Surface watercourses and NRW flood zones within the Mona hydrology and flood risk study area (sheet 1)
- Figure 1.4: Surface watercourses and NRW flood zones within the Mona hydrology and flood risk study area (sheet 2)
- Figure 1.5: Surface watercourses and NRW flood zones within the Mona hydrology and flood risk study area (sheet 3)

Glossary

Term	Meaning
Applicant	Mona Offshore Wind Limited.
Development Consent Order (DCO)	An order made under the Planning Act 2008 granting development consent for one or more Nationally Significant Infrastructure Project (NSIP).
Flood Zone 1	The extent of land having a less than 0.1% (1 in 1,000) chance of river, sea or flooding from surface water and small watercourses in any given year.
Flood Zone 2	<p>The extent of land with a risk of flooding from rivers with less than 1% (1 in 100) but greater than or equal to 0.1% (1 in 1,000) chance of happening in any given year, including an allowance for climate change.</p> <p>The extent of land with a risk of flooding from the sea with less than 0.5% (1 in 200) but greater than or equal to 0.1% (1 in 1,000) chance of flooding in any given year, including an allowance for climate change.</p> <p>The extent of land with a risk of flooding from surface water and small watercourses with less than 1% (1 in 100) but greater than or equal to 0.1% (1 in 1,000) chance of happening in any given year, including an allowance for climate change.</p>
Flood Zone 3	<p>The extent of land with a risk of flooding from rivers with a 1% (1 in 100) chance or greater of happening in any given year, including an allowance for climate change.</p> <p>The extent of land with a risk of flooding from the sea with a 0.5% (1 in 200) chance or greater of happening in any given year, including an allowance for climate change.</p> <p>The extent of land with a risk of flooding from surface water and small watercourses with a 1% (1 in 100) chance or greater of happening in any given year, including an allowance for climate change.</p>
Mona Offshore Wind Project	The Mona Offshore Wind Project is comprised of both the generation assets, offshore and onshore transmission assets, and associated activities.
The Planning Inspectorate	The agency responsible for operating the planning process for Nationally Significant Infrastructure Projects.

Acronyms

Acronym	Description
NRW	Natural Resources Wales

1 Annex 3.10 to the Applicant's response to Relevant Representation from Natural Resources Wales 11 3.6.3

1.1 Introduction

1.1.1.1 This document has been prepared by the Applicant in response to a point identified by Natural Resources Wales (NRW) with respect to figures 1.3 to 1.5 of Volume 7, Annex 2.2: Surface watercourses and NRW Flood Zones (APP-118). The point is as follows:

1.1.1.2 *Para 3.6.3 Surface watercourses and NRW Flood zones (APP-118)*

1.1.1.3 *Para 3.6.3.1. The title of the document may be misleading by using 'Surface watercourses...'. There are no references to the mapped outlines for Surface Water and Small Watercourses as shown on the Flood Map for Planning for watercourses which have a catchment area less than 3km². This is crucial since all of crossings along the route are those of small (ordinary) watercourses and the document should be updated accordingly.*

1.1.1.4 *Para 3.6.3.2. It is noted that 'ordinary' watercourses have been shown on figures 1.3 to 1.5 along with Main Rivers. It may therefore be useful to use the FMfP 'detailed view' to produce the flood outlines for Sea, for Rivers and for Surface Water and Small Watercourses.*

1.2 Response

1.2.1.1 Figures 1.3 to 1.5 of Volume 7, Annex 2.2: Surface watercourses and NRW Flood Zones (APP-118) have been updated to include the mapped outlines for Surface Water and Small Watercourses as shown on the Flood Map for Planning.

MONA OFFSHORE WIND PROJECT

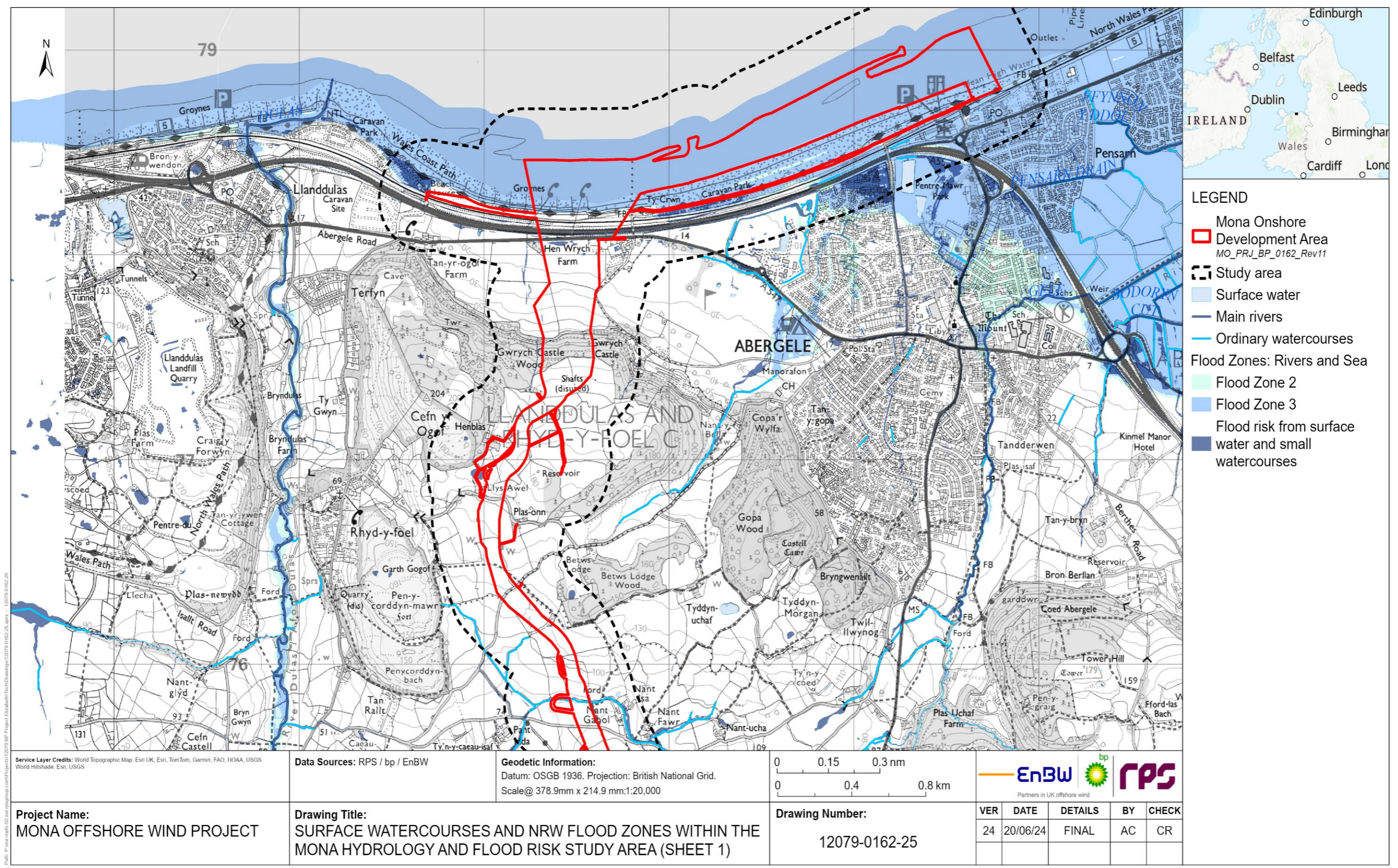


Figure 1.3: Surface watercourses and NRW flood zones within the Mona hydrology and flood risk study area (sheet 1)

MONA OFFSHORE WIND PROJECT

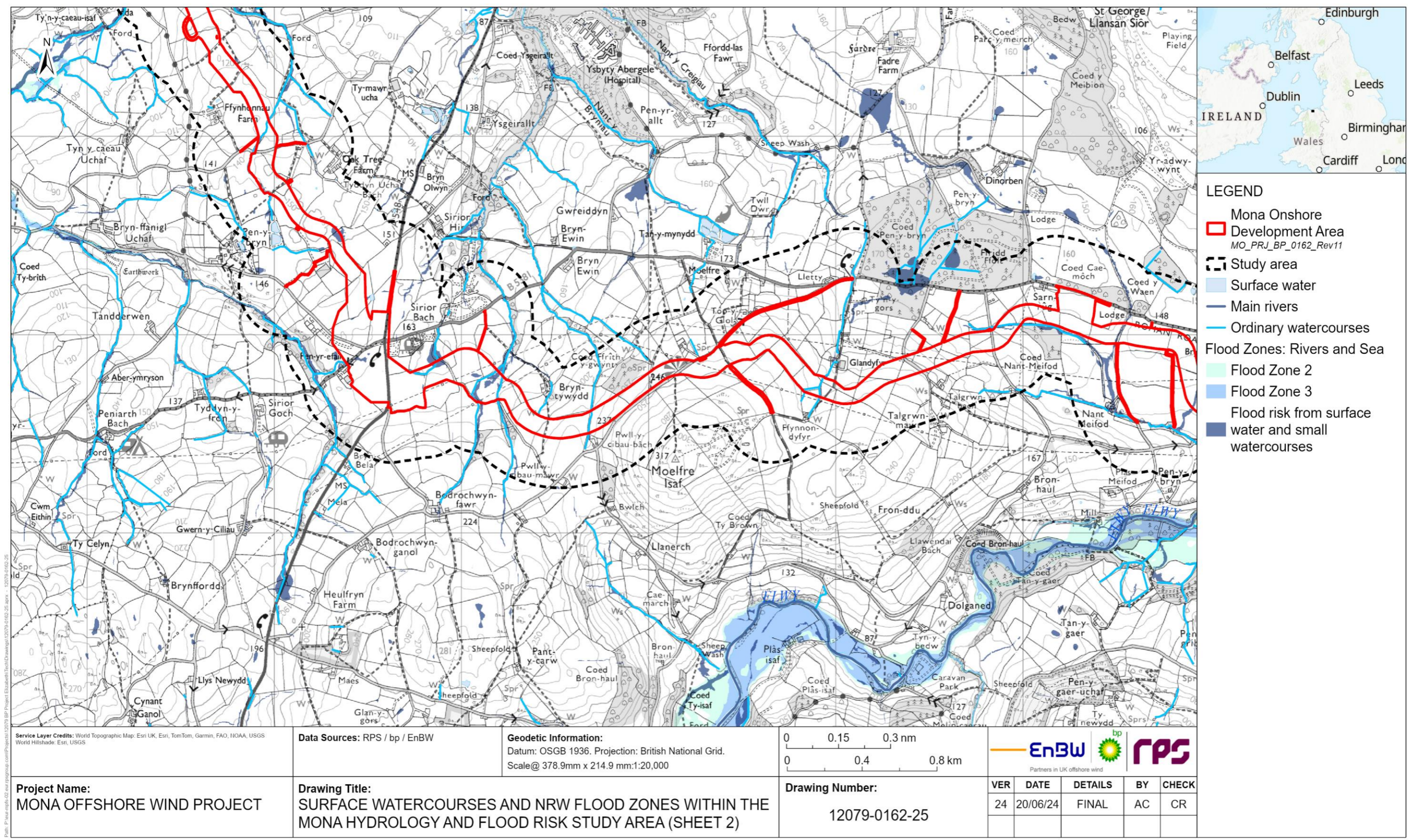


Figure 1.4: Surface watercourses and NRW flood zones within the Mona hydrology and flood risk study area (sheet 2)

MONA OFFSHORE WIND PROJECT

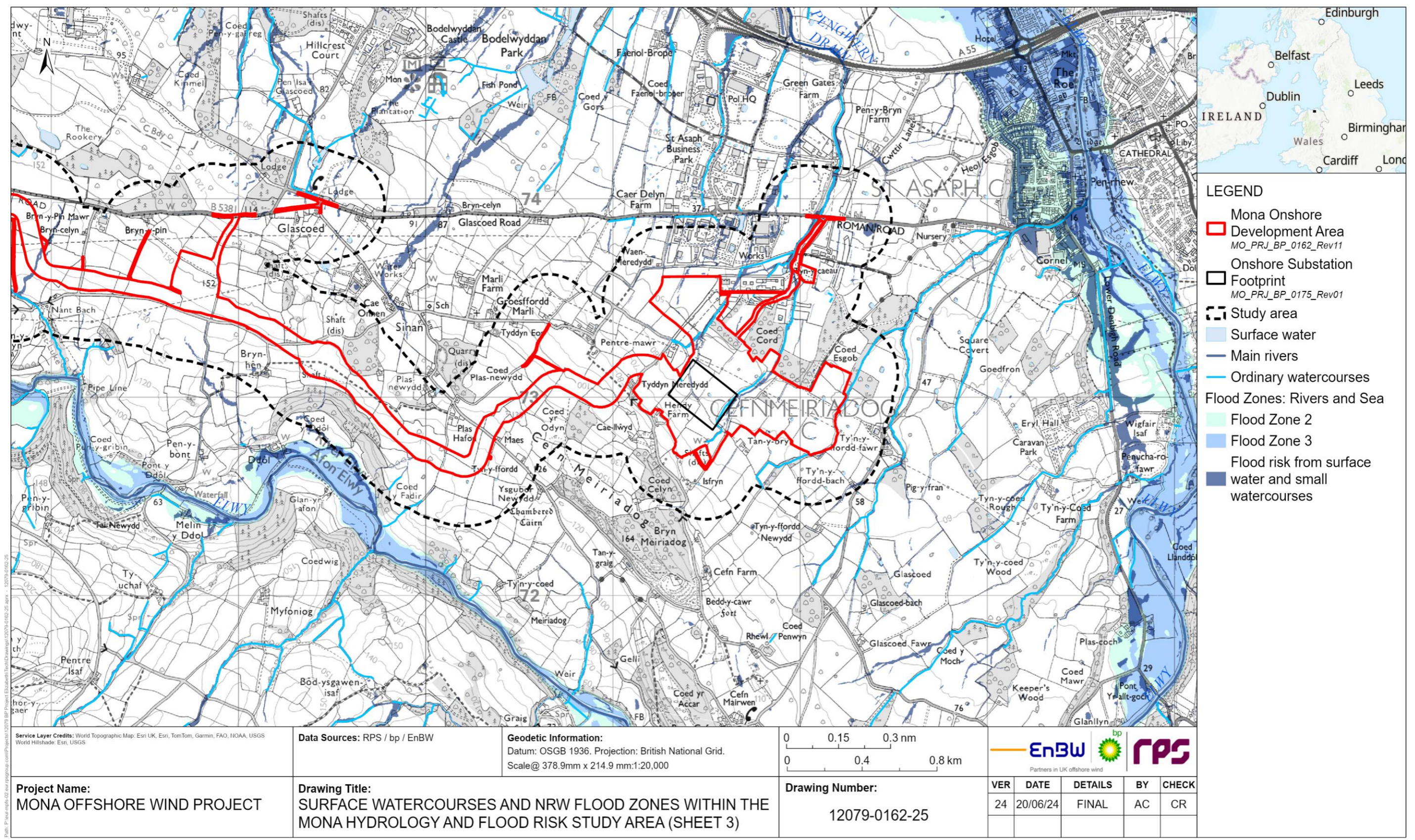


Figure 1.5: Surface watercourses and NRW flood zones within the Mona hydrology and flood risk study area (sheet 3)